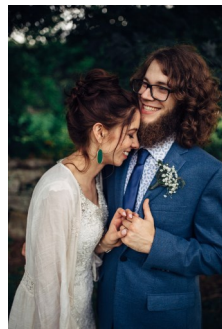


Making History Together!



Nathan Hale Homestead

2299 South Street, Coventry, CT

Built in 1776, the Nathan Hale Homestead is a National Historic Landmark and the birthplace of Connecticut's State Hero, Nathan Hale. The property features an 18th-century English Barn with rare gunstock timber framing, a charming 19th-century Dairy Barn, and open pastures surrounded by stone walls and forest. This charming New England style home offers a quintessentially New England backdrop for your wedding day.

Rental Information and Amenities

- Facility rentals are available between May and October, depending on programming
- Historic barns have been outfitted with electrical outlets and dimmable lighting
- The 18th-century English Barn seats approximately 50 people
- The 19th-century Dairy Barn is equipped with a catering prep area and bar station
- The paved patio may be tented to accommodate adjoining 40' x 40' and 20' x 30' tents
- Expansive green space may be tented to accommodate 250 people
- \$500 non-refundable reservation deposit is due at time of booking
- All events must end by 10 pm
- Liability Insurance required



For more information on site facilities and rates specific to your event,
please contact: (860) 247-8996



2024 Rates

- **Wedding Ceremony & Reception: \$5,000**
 - * Use of 2 historic barns, patio, on-site restroom (max 75 guests) and expansive grounds for up to 10 hours
 - * Tables, chairs, tents, additional bathrooms—not included.
 - * Complimentary Set-up Hour and Clean-up Hours
 - * Complimentary Historic House Open Hour (availability varies)
- **Wedding Ceremony Only: \$500 per hour; or \$2,750 for 4 hours**
 - * Complimentary Set-up Hour and Clean-up Hours
 - * 4-hour package includes a complimentary set-up hour the day before.

Additional Fees

- **Additional Hours: \$500 per hour; Last Minute Additional Hours: \$700 per hour**
- **Refundable Security Deposit: \$500**

\$500 non-refundable reservation deposit and completed contract are required to reserve your date.

(reservation deposit subtracted from total rate)



For more information on site facilities and rates specific to your event,
please contact: (860) 247-8996